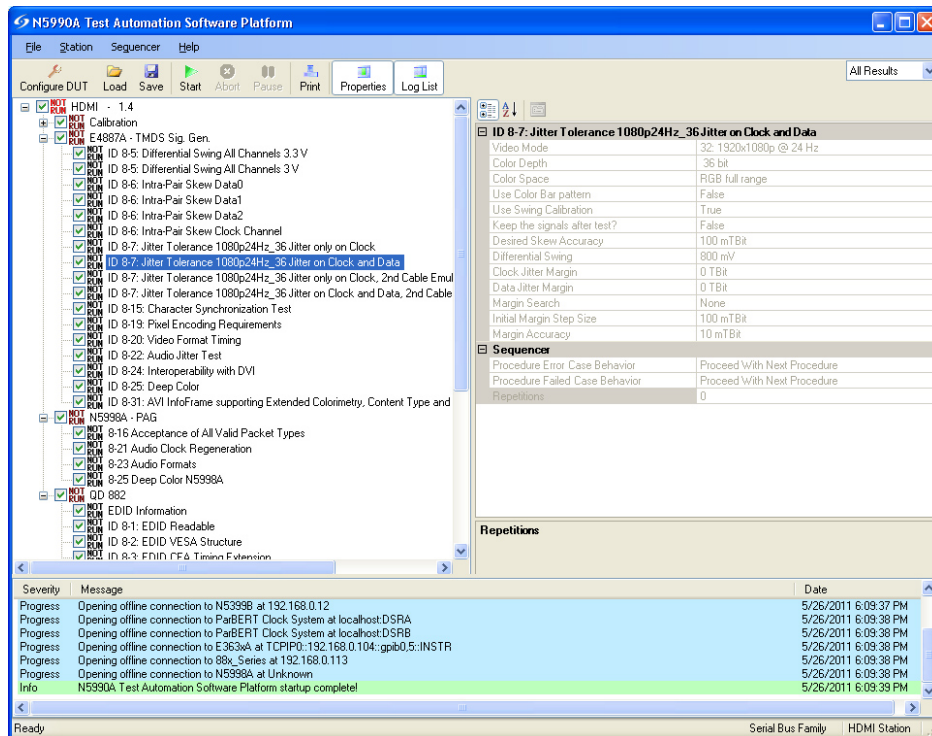


## Single-Box Arbitrary Waveform Generator Support for HDMI and MHL Sink Tests



Agilent Technologies Inc. announced support for the High-Definition Multimedia Interface (HDMI) and Mobile High-Definition Link (MHL) sink tests through its M8190A arbitrary waveform generator and enhanced N5990A test-automation software.

The Agilent solution gives engineers a new way to conduct sink testing and provides a cost-effective and compact alternative to Agilent's well-established E4887A HDMI TMDS signal generator platform. The new test solution reduces development costs while providing accurate test results with greater flexibility than other HDMI and MHL test solutions. Agilent's HDMI and MHL test solution is the only single-box generator solution available today.

Full test-automation software is available, which speeds up testing. It allows engineers to test the performance of HDMI and MHL-enabled devices efficiently and with fast test throughput, increasing productivity.

"Agilent has been involved with the HDMI and MHL specifications since the standards were first established," said Juergen Beck, vice president and general manager of Agilent's Digital Photonic Test Division. "Together with our solutions partner, BitifEye, we address our customers' needs and provide strong support for HDMI and MHL sink testing. Our new, enhanced product portfolio gives our customers access to a full suite of MHL and HDMI testing solutions they will not find elsewhere."

The two AWG modules required for HDMI sink testing fit in a single mainframe.

## Single-Box Arbitrary Waveform Generator Support for HDMI and MHL Sink T

Published on Wireless Design & Development (<http://www.wirelessdesignmag.com>)

---

Other benefits of the Agilent HDMI and MHL 2.0 AWG sink testing solution include:

- Cost-effective configurations.
- Compact setups that eliminate the need for external clock and jitter sources and cable emulators.
- Unique test-automation capabilities with industry's broad test coverage, using N5990A software to control the HDMI and MHL signal generators and oscilloscope.

Agilent's HDMI and MHL 2.0 sink testing solution comprises the following products:

- Infiniium 90000A Series oscilloscope and N5399B compliance test software for calibrating sink test configurations.
- M8190A-based HDMI and MHL signal generators.
- N5990A test-automation software from Agilent's solution partner BitifEye.

"Being able to use advanced measurement tools such as AWG configurations for HDMI and MHL sink testing enables developers to address potential design issues early in the design cycle and get products to market faster," said Alexander Schmitt, CEO of BitifEye. "The AWG configurations complement the existing Agilent and BitifEye HDMI and MHL sink testing solutions and allow our customers to choose the performance they need."

### **Source URL (retrieved on 01/31/2015 - 6:51am):**

[http://www.wirelessdesignmag.com/product-releases/2013/01/single-box-arbitrary-waveform-generator-support-hdmi-and-mhl-sink-tests?qt-blogs=0&qt-digital\\_editions=0](http://www.wirelessdesignmag.com/product-releases/2013/01/single-box-arbitrary-waveform-generator-support-hdmi-and-mhl-sink-tests?qt-blogs=0&qt-digital_editions=0)