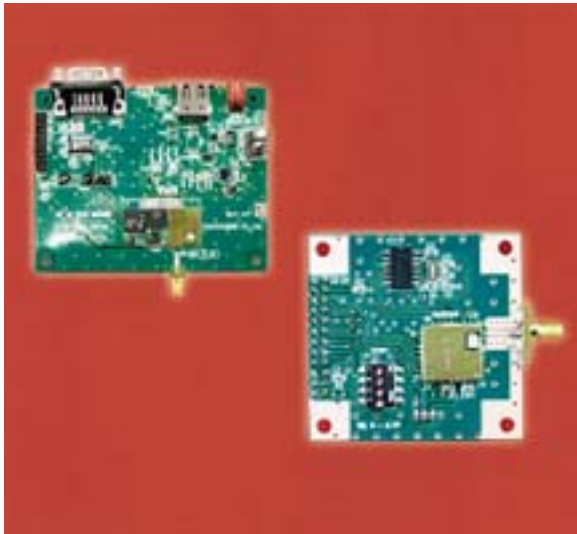


## Evaluation Kit For Bluetooth Modules



Taiyo Yuden announced availability of evaluation kits for its three Bluetooth<sup>®</sup> Modules, allowing engineers to prepare development environments for evaluating use of these modules in their designs. The kits include each module mounted on an evaluation board, a technical manual, a Host Control Interface (HCI) command tool (available only with the full module) that allows direct control of the module's HCI software from an external PC, and a UART interface for RS-232 communications.

Taiyo Yuden's Bluetooth Modules are based on the SiW chipset developed by Silicon Wave. The single-chip radio modem utilizes Silicon-on-Insulator (SOI) BiCMOS process technology and direct conversion demodulation, resulting in high-isolation, low switching loss, use of fewer subcomponents (such as SAW filters or LC filters), and thus lower cost and smaller size.

Among the primary features of the Bluetooth RM Module are a fully digital interface, built-in crystal oscillators, and modem function in the RF chip. Taiyo Yuden's feature-rich RM modules allow expanded design freedom and are currently supported by more than 10 baseband controller manufacturers.

**Source URL (retrieved on 03/05/2015 - 8:14am):**

[http://www.wirelessdesignmag.com/product-releases/2001/02/evaluation-kit-bluetooth-modules?qt-most\\_popular=0&qt-digital\\_editions=0](http://www.wirelessdesignmag.com/product-releases/2001/02/evaluation-kit-bluetooth-modules?qt-most_popular=0&qt-digital_editions=0)